

Research on the Expression of Human Emotion in Fiber Art in the Post-epidemic Era

-- A Case Study of the Work "Breaking Cocoon into Butterfly"

Xinran Ma, Zhixuan Xiao *

School of Wuhan Textile University, Wuhan 430073, China

* Corresponding Author: Zhixuan Xiao

Abstract. With the continuous development of technological innovation, fiber art has been more and more familiar to the public. Today, it has become a pluralistic and comprehensive subject. The infinite openness of fiber art provides a broad space for artists to explore diversified fiber materials and develop novel art forms. Grasping the characteristics of the overall beauty of modern fiber art, according to the rules of formal beauty, the mining and application of expression forms, materials, texture composition and texture design, creation materials, performance style, color shaping and space combination are the source of artists' design and creation. In order to explore the changes of social and humanistic feelings during the epidemic, the idea of pursuing the beautiful vision after the reset of the heart is to integrate the personal emotion into the fiber. Around the theme of the reset and release, the composition of plant fiber was carried out on the graduation works of creative design, using the intuitive post-modern design style, will parse existing theme elements reconstruction, as well as the application of fiber, with fibre has spread to the properties of temperature into the emotional functions given in this work, and make public feel want to convey the profound connotation of works, Bring more interesting and rich visual experience for people.

Keywords: Fiber; Emotion; Material; Shape; Aesthetic.

1. Concept and Characteristics of Fiber Art

1.1. Concept of Fiber Art

Fiber art specifically refers to the art of using natural animal and plant fibers or artificial synthetic fibers to create shapes through weaving, winding, pasting, loop knot and other technological means.

The definition of fiber art is vague, and whether fiber can be called art has aroused many artists and scholars to argue. From the selection of materials and unique modeling techniques of fiber art itself, the process and materialization of fiber are what fiber needs to be sought as a modern art creation. But as a modern art, fiber has indispensable spiritual and aesthetic needs. The original intention of fiber art is both practical and aesthetic, and the purpose of creation needs to meet people's life needs and aesthetic needs. Fiber art and textile art have deep origins, interlace and influence each other, and the young concept of fiber gives modern art more diverse creative inspiration, creating an ancient and young art form of fiber art.

1.2. Characteristics of Fiber Art

Although the form of fiber art tends to be diversified, the sense of fiber form is always the core expression of fiber art. Modern art usually shapes the sense of space and distance of things in the form of strange objects, interspersing a variety of perceptual procedures in different sequence structures. Abstract expression of interest, the dynamic sense of the artwork is displayed in the static structure. Fiber has its own interpretation of power, the wild and delicate sense of form is the charm brought by fiber materials, and the creation of art itself is inseparable from the pursuit of spiritual and aesthetic characteristics, which is also different from the traditional textile art characteristics of fiber art.

The spirit of fiber art is mainly reflected in the combination of materials to bring people different experiences. Artists use appropriate fiber materials to express their inner thoughts when creating. The presentation of fiber art is naturally inseparable from the change of people's self-spirit, and creates tangible rhythm through the inspiration of visual, tactile and olfactory stimulation. The exploration of the spirit establishes a unique language for the various forms of artistic expression. For example, the bold fibers represent passionate words, and the power oppression brought by the wild sense can stretch our visual space indefinitely (Figure 1); The dense fibers represent soft and beautiful words, and with the interweaving and interaction of the threads, they create a subtle, beautiful, soft and hazy artistic conception (Figure 2).



Figure 1. The bold fibers represent passionate words, and the power oppression brought by the wild sense can stretch our visual space indefinitely



Figure 2. The dense fibers represent soft and beautiful words, and with the interweaving and interaction of the threads, they create a subtle, beautiful, soft and hazy artistic conception

The aesthetic expression of fiber art cannot be separated from the application of materials, and the diversification of fiber materials is of pioneering significance for artists' creation. The spirit of fiber is combined with the material for secondary design, and the understanding and perception of art are expounded. Due to the limitations of materials and techniques, the performance of fibers is more prominent. While the artist is in dialogue with the world, he uses observation and experience to give the soul a whisper with materials. Whether it is concrete or abstract form of expression, fiber art follows the basic artistic techniques of color rhythm and composition style, and focuses on exploring the infinite possibilities of aesthetic forms in fiber art. Therefore, in the creation process of fiber art, people can always feel the intimacy and deep psychological feelings created by artistic modeling. Fiber art always introduces its own beautiful language to people in the artist's personal pursuit and the temperature of the spiritual world, so as to promote the aesthetic expression of fiber art constantly deeply in people's hearts.

2. Emotional Expression of Fiber Art

2.1. Performance of Fibrous Materials

Fiber materials are the source of fiber art creation. Artists use the unique properties of fiber and create their own language for the visual, tactile and olfactory atmosphere according to the characteristics of

the material itself. For example, the thickness, temperature, and edges of metal materials themselves will give people a feeling of cold, aloof and aloof (Figure 3). Such materials are also often used to express the expectation of future science and technology. The combination of conceptual structure and hard and straight sense of luster creates a unique difference between the natural environment and reality. The softness of the cotton material (Fig 4) will convey a warm and soft feeling to people, and the artistic shape will bring the audience into the work, as if they are the core of the work, wrapped by the material, skin-friendly, close-fitting and other characteristics express hope and hope for life; Bamboo fiber often has the original natural attributes, cool and delicate feeling will give people a close and comfortable experience, its toughness in the shape of the dryness and falling feeling like a mountain water, falling into the bottom of the valley and then converge into a trickle. The performance of the material integrates its own reflection, softness, roughness and other characteristics, which can produce unexpected artistic effects. Fiber art is to explore and use the expressive force of materials, making fiber art works different from other arts, and rendering our emotional world with this natural material beauty.



Figure 3. The thickness, temperature, and edges of metal materials themselves will give people a feeling of cold, aloof and aloof

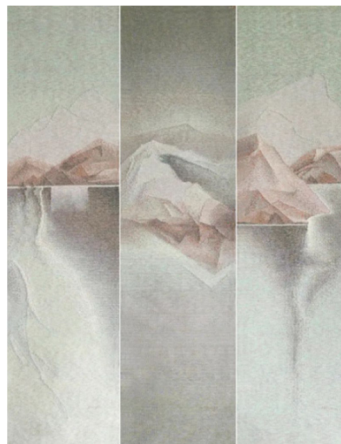


Figure 4. The softness of the cotton material will convey a warm and soft feeling to people

2.2. The Performance of Modeling Structure

If a single material can shape the frame of a fiber work, then the combination of interesting modeling forms will form an artistic scene. Artists can also express the classical romance of picture art, the obscurity of impression, and the abstract interest in the shape of fiber works.

In the performance of fiber works, the form can be divided into strips, sheets and blocks.

Strip shape multi-purpose weaving, winding, combined with the characteristics of silk satin, cotton thread, metal thread, natural fiber, etc., to form an infinite extension of streamer or meandering river in the space. In the overall shape is also usually exaggerated, to achieve a boundless effect (Figure 5).

Sheet modeling methods often draw on the modeling techniques of clothing, and make use of the features of flat materials such as folding, collage, cutting, wrinkling, and penetration to transform fabrics, so that flat fibers can be fully expressive in painting (Figure 6). A reasonable process will combine different fabrics together, after cutting and adding accessories, improve the degree of integration or create a sense of difference. The clever contrast of texture can stimulate the audience's emotional feelings of passion, quiet, lonely and nervous.

The bulk of the block shape will make the fiber more three-dimensional effect, and the works are often distorted and interspersed to enhance the decorative effect of soft sculpture. (Figure 7) In the space placement, the three-dimensional shape will absorb many scene factors, such as the direct effect and reflection effect of light, which can change the expression of the same fiber material under different light sources. The perception conveyed by environmental factors will have the concept of time and space, and the change of light also reflects the passage of time. From three-dimensional space thinking to four-dimensional space feeling, fiber records the intricate connection between people and things, echoing the perception of the fiber into the past time and space. The confusion of three-dimensional perception brought about by this fiber gives new thinking to the visual image of the work of art.

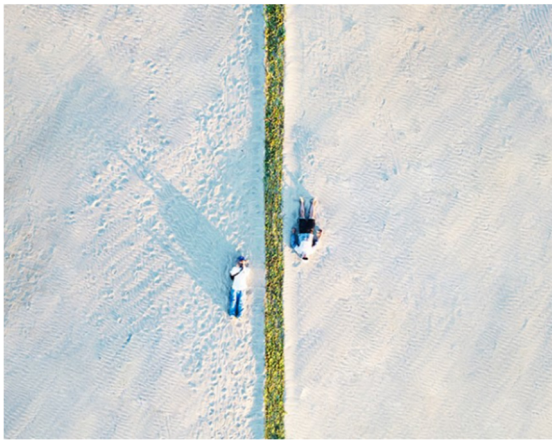


Figure 5. Bar design effect

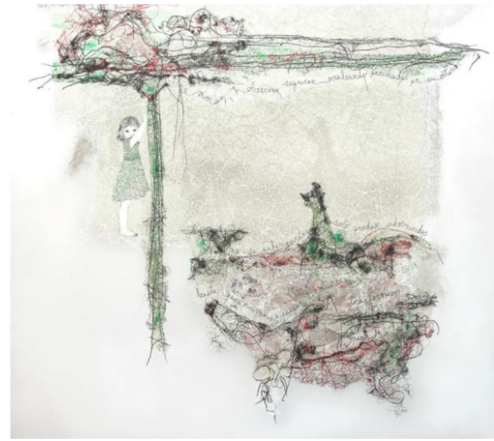


Figure 6. Sheet modeling methods

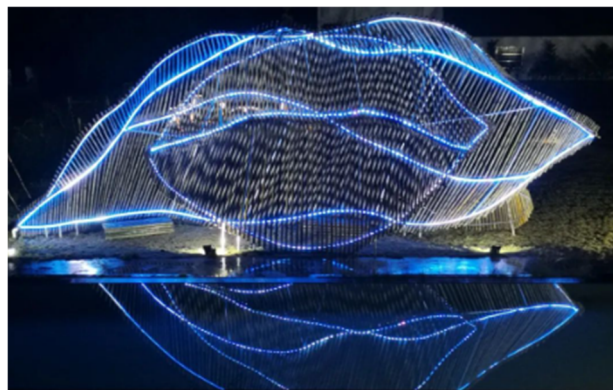


Figure 7. The bulk of the block shape will make the fiber more three-dimensional effect

3. The Expression of Human Feelings of Fiber Art Design in the Epidemic Environment

3.1. Artistic and Emotional Environment under the Epidemic

Three years into the COVID-19 era, humanity has yet to come up with a complete answer in the face of a powerful social crisis. Under the epidemic control, life has added a lot of temporary keys, and each pause is sudden and distant, and people's emotions are constantly in trouble because they are not ready to deal with the epidemic. The isolation of the closed space from the beauty of nature, and the absence of a pair of bright eyes to witness it, is a severe destruction of my physical and mental health.

After the isolation of the window of the soul, human's living habits and values have changed. In a period of isolation, self-reflection and self-communication become the norm. Fiber art is created here (Figure 8), in the static time, the sun and moon starry sky become bright in the brain, the stars cast the stars to the pure land of miracles, and the thinking also gives birth to the natural ecology in the brain, springs, insects... In the short time and space, human beings will be inspired to the bottom of their hearts, and countless wishes will be gathered together like a tangled flow, blooming to change the flowers of self-repressed emotions.

3.2. Emotional Expression of Fiber under Epidemic

In the experience of the epidemic, people are always involuntarily trapped in memories of the past because of the boredom of life, just like crossing back and forth in chaos. Fragmented memories are individual records of past life experiences, memories flow over time, while new memories continue to take root. People want to use art to go back to the past or to the future.

Because of the differences in the inner emotions of each person, the cognition and consciousness of different levels are different, and the perception of fiber art works is different. For example, the material in the fiber that makes people feel warm (Figure 9) will also create a warm scene. In this intentional interior scene, the observer may be surrounded by warmth in the center of the temperature, or it may be far away from him, and can only look with intentional vision, but it is cold. The extreme perception of difference stems from the observer's inner negative emotions. Although artistic works can give people guidance in the expression of emotions, they have no direct purpose.

The narrative of fiber art works in their emotional expression. Emotional symbols in the life of the epidemic are used as creative elements, so that people can get easy to understand life information and guide people's thinking (Figure 10). The atmosphere of life created by the narrative process, and the direct use and decomposition of life objects often appear in the fiber materials, and the intuitive expressive force builds artistic expression, thus establishing a close emotional connection between the meaning of art and the emotions of daily life. Events resonate with the audience, but memories cannot be recreated. Fiber emotional works can transform people's memories and resumes of the past and reality under the epidemic into artistic language, and stay in the future at every moment.

3.3. Human Emotional Needs under the Epidemic

The sudden epidemic has changed people's lifestyle and reduced the time for people to communicate with society, which will induce psychological problems and even diseases. The way to solve a series of psychological problems is to relieve emotions. The artistic creation of fiber has a good effect on releasing emotion. Emotions can be celebrated through the plaiting of fibers, depicted through flat fibers, or embodied through three-dimensional fiber sculpture (Figure 11).



Figure 8. Fiber art is created here **Figure 9.** The material in the fiber that makes people feel warm



Figure 10. The narrative of fiber art works in their emotional expression

Releasing emotion is a very effective way. Artists need to clear the way for people's emotional direction through positive guidance. Fiber has infinite possibilities and the integration of life. The presentation of fiber art shows the imagination and creativity of artists, and people's optimistic attitude towards the epidemic can be gathered in the fiber composition. In the fiber modeling, it should meet people's aesthetic needs, and at the same time convey the temperature of the fiber to the audience. The exchange of artistic senses helps people feel the early morning and dusk in the epidemic. Use the taste of life to heal the body and mind, to a certain extent, can reduce the psychological depression. When people have a relaxed atmosphere and positive spirit. Stress can be relieved to varying degrees and achieve the purpose of healing the body and mind.

4. Take Breaking the Cocoon to Become a Butterfly as an Example to Explore the Emotion of the Epidemic

4.1. Creative Ideas

As described in the title of the work, the process of butterfly transformation of the caterpillar is simulated. In the design concept, people bind themselves, in the cocoon room, the body becomes liquid and re-shaped, and finally, the growth of bright and powerful wings from the cocoon. People trapped by the epidemic, as if their lives were caught in the red line of fate, and after falling down, they curled up in a ball in pain. The free life of the past slowly faded away, and the idea of longing for freedom burst out of the brain like mucus, and flowed through the body. In order to dissipate the epidemic, self-complaints and distress are constantly dissolving and devouring. People enter the eternal dream.



Figure 11. Three-dimensional fiber sculpture

The concept of complete metamorphosis after dissolution can be understood as two life forms of the same thing, which is also the characteristic of butterfly transformation. When faced with the negative impact of force majeure events in life. Human inner emotions will produce the emotion of escape, constantly closed and suppressed, eager for life to have a stronger self-birth in the future. In the

process of transformation, time becomes floating, things lose gravity, just like Dali's dream, everything is like mud. We can see life flowing like a liquid, but the reality of the cocoon is still.

The epidemic has divided human life into two parts, and the changes in the life of the later generations are completely different from the previous lives, and the new life is constantly accustomed to changing people's way of life.

At the same time, there are doubts and doubts. And these thoughts in the closed time will belong to their own times, as a valuable wealth.

4.2. Fiber Design Performance

The uniqueness of cocoon material shape and the difference of fiber composition make the artistic form of the work more plastic. As a closed space, the cocoon cannot allow the audience to see the internal structure. In order to show the connotation of human growth inside the cocoon, the work refers to Carol. Williams' butterfly cocoon experiment. The spiral partition and analysis of the outer wall of the cocoon make the relationship between modeling and fiber art more closely, compress the closed space like a cage, and increase the expression of fiber modeling.

The texture of the fiber material is part of the expressiveness of the shape. The design impression of the cocoon is a warm and comfortable cradle, while the soft fiber material has the characteristics of warmth, softness and affinity. Under the epidemic, direct communication between people becomes blocked, and the emotional temperature cannot be transmitted in time, which will also reduce the emotional temperature of people. The visual temperature brought by soft fibers transforms the artistic form and space construction of fibers into visual elements that affect people's senses. Woolly materials use their own elastic characteristics to form indefinite and changing imagined states for vision. Like the life meaning of cocoons, soft materials express tension with shapes, expanding and contracting like breathing, conveying an implied visual form.



Figure 12. Cocoon material works of art

4.3. Design Exploration

Line is the source of fiber art, and strip modeling can also be interpreted as an abstract visual language, and the conceptual modeling method can outline the concrete modeling performance, which also adds the possibility and narrative to the creation.

The coil of the spiral has the meaning of wrapping, wrapping the whole body with a strip to accept the whole body, and healing the pain with warmth. The softness and warmth of the fiber are the natural characteristics of the touch, and the softness and comfort make people feel the impulse to touch and be touched. For example, the soft warmth brought by bedding and clothes is wrapped to leave a peaceful place to make people comfortable. Countless threads in life are interwoven into beauty with the warmth of the moment, which runs through the whole life. The cocoon records the

beautiful moment with fiber, and feels the beauty through sight and touch. But the charm of fiber is far more than visual and tactile feelings, but also through the texture of nature, through color and contrast, create atmosphere through space and so on. As far as the work itself expresses the human emotions under the epidemic, the cocoon serves as a cradle to reset the entry point for the work and the viewer, hoping to find a kind of beautiful and gentle feeling in the fibers of people, while respecting the viewer to bring their own emotional dreams into the cocoon, leaving their own unique beautiful memories and wishes.

5. Conclusion

Fiber art, with its strong symbolism of materials and diversity of shapes, provides emotional sustenance for people's spiritual world under the contemporary epidemic environment. Fiber art embodies the artist's observation and perception of life, and the interweaving of fibers intersperses people's hearts, understanding the needs and aspirations of people's hearts. The needs of the human spirit are more intense, and the temperature generated by the artistic expression of the fiber can be warmer.

Fiber art is an art that develops with The Times, and the artist's exploration of fiber art is also a long process. The change of aesthetic demand will also enrich the artistic language, expression techniques and formal beauty of fiber. In the future development of fiber art, we need to continue to pay attention to and explore, in order to enrich social humanistic emotions, and show the unique charm of fiber art emotional expression and spiritual beauty.

References

- [1] Application of paper materials in modern fiber art design [J] LV Fanli, Zhang Yanli, Han Xue, Papermaking Information, 2021 (01).101-102.
- [2] The innovative application of fiber art - A case study of the series of "Jing 3 Wei 5" [D]. Zhang Lijia. Harbin Normal University, 2021.
- [3] "From Lausanne to Beijing," the 11th International Fiber Art Biennale was held on the line [J]. Zhang Yifan. China Textile, 2021 (01) 93.
- [4] The use of 'thread' in fiber material installation art [J]. Jiang Li. "Chinese Architectural Decoration" 2021 (01) 76-77.
- [5] Application and innovation of rattan weaving in fiber art [J]. Zhang Xiang, WANG Wenjuan. Modern Decoration. 2015 (08)205.
- [6] Research on female fiber art in the contemporary art atmosphere: A case study of Cao Linling's newspaper fiber art Hui and Phoenix Nirvana [J]. Gao Hanjun, Ren Xingyuan. Sichuan Drama.2017 (04) 36-39.
- [7] A brief discussion on the application of fabric elements to "stiffness and softness" in Chinese contemporary art works - A case study of Liang Shaoji's works [A]. Zhang Ran.2018.
- [8] Wild crochet art "Yarn bomb" artist [J]. Jiang Yi. World Expo.2012(02)54-55.
- [9] Research on the application of color in fiber art [C]. Gao Wei, Jin Xin. 2014 China Fashion Color Association Annual Meeting. 2014.
- [10] Research on the application of fiber materials in contemporary installation art [J]. Han Bing. Art Science and Technology. 2018(12)226-227.