

Challenges and Solutions in the Construction of the Hong Kong-Zhuhai-Macao Bridge Immersed Tunnel

Yubai Li

Beijing Haidian Foreign Language Academy, Beijing, China

Liyubai0427@outlook.com

Abstract. This research aims to systematically analyze the design and construction challenges encountered during the development of the Hong Kong-Zhuhai-Macao Bridge (HZMB) immersed tunnel. By thoroughly examining these challenges, the study seeks to generate valuable insights that can inform future infrastructure projects of similar scale and complexity. A comprehensive understanding of the design principles employed, construction techniques implemented, and risk mitigation strategies utilized throughout the HZMB project will enhance the safety, reliability, and efficiency of immersed tunnel construction. Furthermore, the findings of this research have the potential to stimulate innovation in immersed tunnel technology, leading to the development of more advanced engineering solutions that prioritize sustainability. By addressing the unique complexities associated with immersed tunnels, this research not only contributes to the body of knowledge within civil engineering but also serves as a guide for practitioners and researchers aiming to push the boundaries of infrastructure development. Ultimately, this paper aspires to support the advancement of civil engineering practices, ensuring that future projects are better equipped to meet the demands of modern infrastructure needs.

Keywords: Hong Kong-Zhuhai-Macao Bridge; Immersed Tunnel; Construction Challenges; Civil Engineering

1. Introduction

The advancement of global transportation infrastructure has catalyzed the development of immersed tunnels as a sophisticated and environmentally sustainable solution for traversing aquatic environments. Immersed tunnels not only mitigate ecological disturbances but also significantly enhance traffic capacity, thereby facilitating regional economic integration. Current literature on immersed tunnels indicates a growing body of research addressing various aspects, including hydrodynamic behavior, settlement analysis, and structural integrity. Numerous studies have explored the interactions between immersed tunnels and their aquatic environments, focusing on the influence of hydrodynamic forces and soil-structure interactions. However, there remains a notable deficiency in comprehensive studies that address the specific challenges encountered during the construction of immersed tunnels in complex marine settings. The Hong Kong-Zhuhai-Macao Bridge (HZMB) immersed tunnel, with a length of approximately 6 kilometers, serves as a pivotal case study, exemplifying the technological evolution and engineering complexities inherent in immersed tunnel construction [1]. This paper aims to provide a detailed examination of the design and construction challenges associated with the HZMB immersed tunnel. The discussion will commence with an overview of the project's background and objectives, followed by an analysis of the principal challenges encountered during the design and construction phases, including hydrological conditions, settlement management, and waterproofing strategies. Finally, the paper will propose targeted solutions and recommendations to enhance the efficacy of future immersed tunnel projects. Through this rigorous investigation, the study aspires to contribute to the theoretical and practical knowledge base surrounding immersed tunnel construction, ultimately advancing the field of civil engineering and infrastructure development.

2. Engineering Background

The HZMB is an engineering marvel that spans approximately 55 kilometers, featuring the world's longest immersed tunnel, which measures about 5.7 kilometers, as shown in Fig. 1. This tunnel is essential for enhancing connectivity and promoting economic integration among Hong Kong, Zhuhai, and Macao. However, the construction of the immersed tunnel is fraught with challenges that can compromise its safety and functionality. This paper aims to analyze the primary challenges encountered during the construction of the HZMB immersed tunnel and the corresponding solutions implemented to mitigate these issues.



Figure 1. Location of the HZMB [2]

The immersed tunnel is designed to facilitate the passage of vehicles while minimizing the impact on marine traffic and the environment. The construction process involves the use of large concrete segments that are floated into position and then submerged to the seabed. This method, while efficient, introduces a range of engineering challenges that require careful consideration and innovative solutions.

The impetus for this research is rooted in the HZMB's strategic objective to connect major urban centers within the Pearl River Delta, thereby fostering economic synergy and regional connectivity. The construction of the immersed tunnel presents multifaceted challenges due to its submerged nature, where it is subjected to extreme marine conditions, including high currents and wave action. Furthermore, the design and construction processes must address critical issues related to structural stability and waterproofing, necessitating a comprehensive understanding of geotechnical and hydrodynamic interactions. These complexities underscore the urgent need for in-depth research focused on the design and construction methodologies employed in immersed tunnels, particularly in challenging marine environments.

3. Impact Factors

3.1. Weather Impact

Weather conditions significantly impact the construction of the HZMB immersed tunnel. The region is prone to severe weather events such as typhoons, heavy rainfall, and strong ocean currents. For instance, the typhoon season typically peaks between May and October, bringing with it high winds

and heavy seas that can disrupt construction activities. The unpredictable nature of weather patterns can lead to delays in construction schedules, pose safety risks to workers, and potentially damage the tunnel structure during the installation of its segments. The construction team must navigate these challenges to ensure the project proceeds smoothly and safely.

To combat the challenges posed by adverse weather, the construction team has implemented several proactive measures. Advanced technologies such as satellite imagery, meteorological data, and real-time monitoring systems have been deployed to predict weather changes accurately. This system enables the construction team to make informed decisions regarding the timing of construction activities. Construction schedules have been meticulously planned to avoid peak typhoon seasons, involving the analysis of historical weather data and forecasting models to identify optimal windows for construction. Additionally, temporary protective structures, such as windbreaks and tarpaulins, have been erected to shield construction sites from extreme weather, protecting workers and equipment from harsh conditions. Comprehensive emergency response plans have also been developed to ensure worker safety during severe weather events, including evacuation procedures and communication protocols to keep all personnel informed [3].

3.2. Settlement Issues

Settlement is a critical concern in the construction of the immersed tunnel. The tunnel is constructed beneath the seabed, where the thickness of the overlying soil can reach up to 21 meters. This can lead to potential differential settlement due to the varying soil conditions and the significant weight of the tunnel structure. Uneven settlement can result in excessive stress at the joints, increasing the risk of leaks and structural failure. For example, the presence of soft clay layers can exacerbate settlement issues, leading to concerns about the long-term stability of the tunnel [4].

To address settlement issues, extensive geotechnical investigations were conducted prior to construction. Detailed soil sampling and analysis were performed to determine the mechanical properties of the soil layers, employing techniques such as cone penetration tests and borehole sampling to assess soil composition and strength. A sophisticated settlement monitoring system was established, incorporating sensors and inclinometers to track any movement of the tunnel structure in real-time, allowing for continuous assessment of the tunnel's stability. The design of the tunnel includes flexible joints and memory supports that can accommodate minor settlements without compromising structural integrity, allowing for controlled movement and minimizing stress concentrations at critical points. In areas identified as high-risk for settlement, ground improvement techniques such as soil stabilization and compaction grouting have been implemented to enhance the load-bearing capacity of the soil [5].

3.3. Waterproofing Requirements

Given the underwater location of the immersed tunnel, waterproofing is a paramount concern. Water ingress poses a significant risk to the structural integrity and longevity of the tunnel. Traditional concrete structures may not provide adequate waterproofing, necessitating the use of advanced materials and techniques. The potential for water to penetrate through joints and cracks can lead to corrosion of reinforcement steel and deterioration of the concrete over time [3].

To address these concerns and enhance waterproofing capabilities, several measures have been implemented throughout the construction process. Specifically, the tunnel utilizes high-performance waterproof concrete with a strength grade of C45 and a permeability classification of P12, designed to resist water penetration effectively. In addition, the design of the tunnel joints incorporates innovative sealing solutions, as shown in Fig. 2 and Fig. 3, including GINA gaskets and Omega seals, which serve as primary and secondary waterproofing barriers. These seals are strategically placed to ensure effective management of any potential water ingress.

Moreover, rigorous quality control measures are in place to ensure that all materials used in construction meet the required specifications for waterproofing. This includes regular testing and

inspection of concrete samples and sealing materials. To further safeguard against potential issues, a maintenance plan has been established, which involves conducting regular inspections of the tunnel structure with a focus on joints and potential leak points. This proactive approach ensures that any issues are identified and addressed promptly, thereby safeguarding the tunnel’s integrity over time.

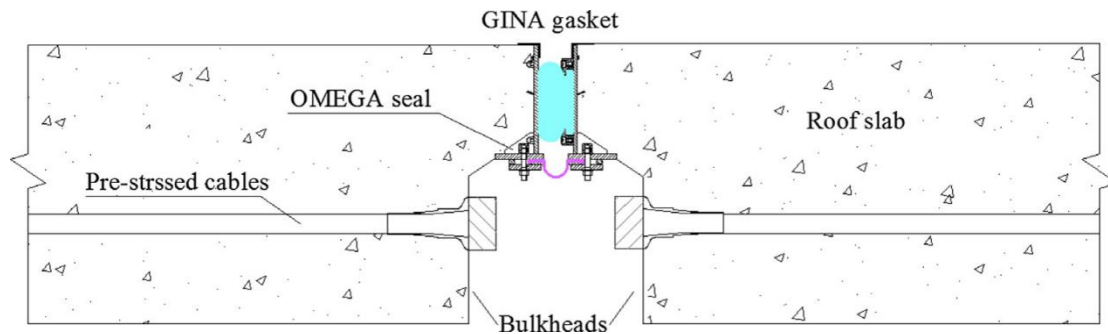


Figure 2. Details of immersion joint [2]

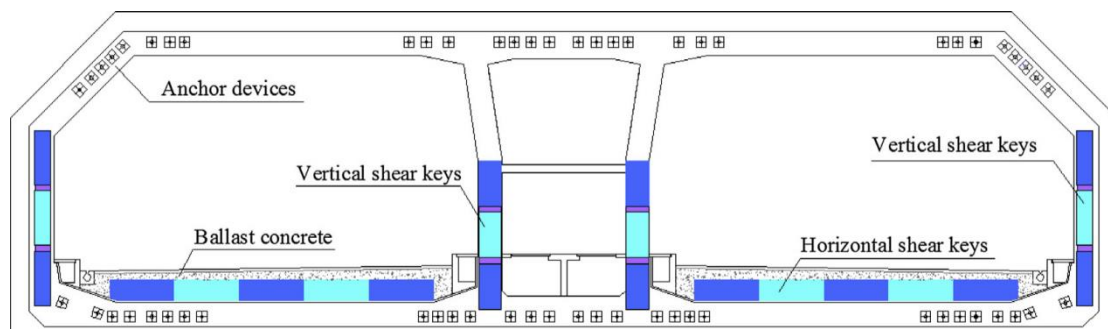


Figure 3. Cross-section of immersion joint [2]

3.4. Environmental Protection

The construction of the HZMB immersed tunnel raises significant environmental concerns, particularly regarding the impact on the marine ecosystem in the Pearl River Delta. Construction activities can lead to disturbances in marine habitats, increased sedimentation, and potential pollution. For example, the dredging and installation of tunnel segments can disrupt local marine life and water quality.

To address environmental concerns, a comprehensive environmental management plan has been developed. The implementation of silt curtains during construction helps to minimize sediment dispersion in the water, containing sediment and protecting surrounding marine habitats from disturbance. Regular environmental monitoring is conducted to assess the impact of construction activities on marine ecosystems, ensuring compliance with environmental regulations and standards.

The construction team has also engaged with local communities and stakeholders to raise awareness about the project’s environmental impact and to promote sustainable practices. Public consultations have been held to discuss potential concerns and gather feedback from residents, ensuring that their voices are heard in the decision-making process.

4. Solutions and Recommendations

In addressing the multifaceted challenges associated with the design and construction of the HZMB immersed tunnel, several solutions and recommendations have been identified. These strategies aim to enhance the structural integrity, ensure waterproofing, and facilitate effective construction processes in the complex marine environment.

4.1. Enhanced Waterproofing Measures

- (1) Use of high-performance materials

Employing high-grade waterproof concrete, such as C50, which exhibits superior impermeability and durability, is essential. This material should be used in conjunction with advanced sealing techniques at joints, including the application of GINA gaskets and Omega seals, to create a robust barrier against water penetration.

(2) Regular maintenance and monitoring

Establishing a comprehensive maintenance plan that includes periodic inspections and monitoring of the waterproofing systems will help in early detection of potential failures. Utilizing non-destructive testing methods can provide valuable insights into the condition of the tunnel structure over time.

4.2. Structural Design Innovations

(1) Adaptive foundation systems

Implementing composite foundation systems that combine bored piles with medium-coarse replacement sand can effectively manage differential settlements between the tunnel and artificial islands. This approach allows for better load distribution and minimizes the risk of structural damage.

(2) Segmental construction techniques

Utilizing prefabricated segments that are match-cast under controlled conditions can reduce the likelihood of shrinkage cracks and enhance the overall quality of the tunnel structure. The segments should be designed to accommodate thermal expansion and contraction, ensuring stability throughout the tunnel's lifespan.

4.3. Advanced Construction Methods

(1) Utilization of specialized pontoons

Employing specially designed pontoons for the floating and immersing phases of construction can significantly reduce disruptions to marine traffic. These pontoons should be equipped with stabilization systems to maintain their position during adverse weather conditions.

(2) Comprehensive risk assessment framework

Developing a robust risk assessment framework that evaluates potential hazards associated with marine construction activities is crucial. This framework should include contingency plans for extreme weather events, ensuring that construction operations can be adjusted or halted as necessary to safeguard both personnel and equipment.

4.4. Collaborative Approaches

(1) Stakeholder engagement

Engaging local communities, government agencies, and environmental groups in the planning and construction phases can foster a sense of ownership and minimize opposition. Transparent communication regarding project impacts and benefits is essential.

(2) Interdisciplinary collaboration

Encouraging collaboration between civil engineers, marine engineers, geotechnical experts, and environmental scientists will facilitate a holistic approach to problem-solving. This interdisciplinary teamwork can lead to innovative solutions that address the unique challenges posed by the immersed tunnel construction.

5. Conclusion

The construction of the HZMB immersed tunnel presents a multitude of challenges, including adverse weather conditions, settlement issues, waterproofing requirements, and environmental protection concerns. However, through the implementation of advanced engineering techniques, proactive

planning, and a commitment to environmental stewardship, these challenges can be effectively managed. The lessons learned from this project can serve as a valuable reference for future infrastructure projects, emphasizing the importance of innovation and sustainability in large-scale engineering endeavors.

As the HZMB project continues to progress, ongoing research and development efforts will be essential to address any emerging challenges and to further enhance the safety and sustainability of the immersed tunnel. Collaboration among engineers, environmental scientists, and local communities will be crucial in ensuring the long-term success of this monumental infrastructure project. The HZMB not only stands as a testament to engineering excellence but also serves as a model for future projects that seek to balance the demands of modern transportation with the need for environmental protection and sustainability.

In summary, the construction of the HZMB immersed tunnel exemplifies the complexities of modern engineering projects, where innovative solutions and careful planning are essential to overcoming challenges. The successful completion of this project will not only enhance connectivity in the region but also contribute to the economic growth and development of Hong Kong, Zhuhai, and Macao. The commitment to addressing environmental concerns and ensuring the safety and durability of the tunnel will set a precedent for future infrastructure projects around the world.

References

- [1] C. Du, Q.H. Gao, S.A. Song, Seismic response analysis of immersed tunnel of Hong Kong Zhuhai-Macao Bridge under oblique seismic waves, *Journal of Hebei University of Technology* 53.03 (2024) 76-86.
- [2] Z.N. Hu, Y.L. Xie, J. Wang, Challenges and strategies involved in designing and constructing a 6 km immersed tunnel: A case study of the Hong Kong–Zhuhai–Macao Bridge. *Tunnel. Undergr. Space Technol.* 50 (2015) 171–177.
- [3] Y.P. Liu, X.W. Xu, H.B. Wei, J.W. Song, Loading test technology in deep water for Hong Kong-Zhuhai-Macao Bridge, *Rock and Soil Mechanics* 39.S2 (2018) 480-485.
- [4] M. Lin, W. Lin, H.Q. Yin, X.D. Liu, K.X. Liu, Memory bearing-problem solutions of immersed tunnel immersion joint differential settlement, *China Harbour Engineering* 38.06 (2018) 1-8.
- [5] D.W. Guo, W.K. Zheng, Settlement analysis research on immersed tunnel of Hong Kong-Zhuhai-Macao Bridge, *Shanxi Architecture* 38.16 (2012) 212-214.