

Landscape Design of Public Space in Shangwu Village, Beichuan County, Mianyang City

Binghan Xiong*, Murong Shi, Xinyuan Fan

Southwest Minzu University, Chengdu, China

ABSTRACT

As a national-level traditional village, Shangwucun's economy and tourism continue to develop, which brings many opportunities and challenges to the village. However, it also exposes many problems existing in public space landscape, such as lack of functional structure, lack of landscape interaction, lack of landscape culture, etc. This paper aims to improve the functional complexity of the overall public space landscape, increase the vitality of public space landscape, and strengthen the cultural expression of space landscape by using the three design principles of integrity, participation and region. This will improve the landscape quality of village public space, help the development of rural tourism in Shangwucun, and provide a certain reference for the landscape design of public space in traditional villages.

KEYWORDS

Traditional villages; Landscape design; Public space

1. INTRODUCTION

Shangwu Village, Beichuan Qiang Autonomous County, Mianyang City, Sichuan Province, belongs to the radiation area of Qiang culture in the Tibetan-Qiang Yi Corridor, which is located in the northwest part of Beichuan County, surrounded by mountains and rivers, and the Qiang stilted buildings are distributed along the gully, row upon row. With Xiwo Qiang Village as the core, Dazhaizi Site and Xiaozhaizigou Nature Reserve as the carrier, Shangwu Village is guided by the compound protection mode to realize the inheritance and protection of traditional historical information and cultural landscape, and was included in the second batch of Chinese Traditional Villages List in 2013.

Public space, as an important spatial integration of traditional village culture and nature, is a space for villagers to carry out daily entertainment and major collective festival celebrations, and an important platform for foreign tourists to understand the characteristics of traditional villages, experience folk culture and provide public services. This study takes the traditional village of Shangwu Village in Mianyang city as the research object, sorts out the cultural landscape types, public space layout and types of Shangwu village, analyzes the existing problems of public space landscape, and takes the inheritance of traditional village landscape styles as the premise to update and design the public space landscape of the village from three dimensions of functionality, interaction and culture. Enhance landscape services through sustainable landscape design, improve local living environment, and promote the coordinated development of traditional villages and rural tourism.

2. CULTURAL LANDSCAPE TYPE OF SHANGWU VILLAGE

2.1. Traditional Architecture of the Qiang Nationality

Shangwu Village has a wooden structure of stilted buildings, mainly distributed in Xiwo Qiang village. The overall layout of Xiwo Qiang Village is relatively cramped, showing a banded shape. With the elevation of the terrain, the stilted buildings in the Qiang Village are row upon row, orderly and quite imposing.

2.2. Ruins and Relics

There are two residential sites in Shangwu village, Dazhaizi and Shangxiwo, both located halfway up the mountain, which can be traced back to the late Ming Dynasty. According to legend, the two settlements were migrated from MAO County to escape war, bandits and brothers. The buildings are built of stone with strong defensive ability, fully demonstrating the superb architectural skills and indomitable survival wisdom of the Qiang ancestors.

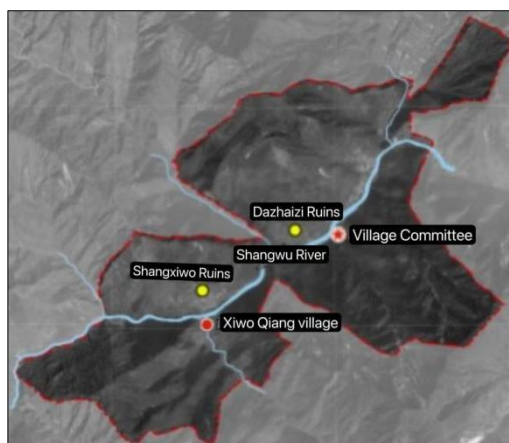


Figure 1. Site distribution map of Shangwu Village, Beichuan County, Mianyang City, Sichuan Province

2.3. Intangible Cultural Resources

Shangwu Village is one of the traditional villages with the largest number of intangible heritage projects and non-genetic inheritors in Beichuan County. Among them, the intangible cultural heritage projects include the national Qiang Calendar Year, mouth music, and Qiangge War; Sichuan provincial Qiang flute production and performance skills, Qiang sarang, Qiang embroidery traditional embroidery craft; Mianyang Qiang folk songs, interruptions; In addition, Xiwo Qiang Cultural Festival, Salang Festival and other folk festivals have also been selected into the Beichuan county intangible heritage list. There are 12 inheritors at all levels in Shangwu Village. Among them, there are 3 provincial inheritors, 5 municipal inheritors and 4 county-level inheritors.

3. SPATIAL PATTERN ANALYSIS OF SHANGWU VILLAGES

3.1. Analysis of the Overall Spatial Layout of Villages

Xiwo Qiang Village as a whole presents the landscape environment of "three mountains ring arch and two water Lingling", the north is Zhaobi Mountain, the east is Miaozi Mountain, the west is Dutian Mountain, the Shangwu River is bypelled from the north of the stockade, the mountains and the water echo each other, showing the natural pattern surrounded by mountains and rivers, the two complement each other. The village buildings are concentrated in the valley, about 700 meters long

from north to south, and less than 80 meters wide from east to west at the narrowest point. The settlement site presents a spatial layout of a strip as a whole, but the architectural layout is not compact, but the upper, middle and lower villages are scattered on the north-south axis. The outside of the building is surrounded by tilled fields, and the houses and fields are connected to each other, which makes farming convenient, beautiful environment and pleasant climate. The village as a whole constitutes the spatial texture of "building - road - pastoral - water system - mountain", and each element reflects and lives together.



Figure 2. Diagram of Qiangzhai Mountain water pattern in Xiwo Village, Shangwu Village, Beichuan County, Mianyang City, Sichuan Province

3.2. Analysis of Key Spatial Structure of Villages

3.1.1. Street space

The village road system generally runs north-south, including three main roads in the village, Zizi Road, Huanzizi Road and Yinshan Road, among which the Zizi Road and Huanzizi Road connect the upper, middle and lower villages. After long-term construction and development, the village has formed a partial open street space with the road as the axis and each household yard in series, forming the overall "axis type". The streets and lanes bear the main production and life transportation functions in the village to meet the needs of villagers for convenient access; On both sides are mainly the traditional stilted buildings of the Qiang nationality, which are distributed row upon row, bringing different views of stilted buildings to the streets, and a strong sense of viewing experience.

3.1.2. Courtyard space

The traditional village buildings are basically built at the valley Pingba with the mountain back facing the water, and most of the buildings are equipped with exclusive courtyard space, which is laid out in front of the building and communicated with the road in front of the house. The courtyard space is large and small, and there is no fixed shape. For the Qiang people living in the valley, the courtyard space of Shangwucun village is obviously different from other Qiang villages built in the mountains or valleys. Its courtyard space plays a very obvious role, carrying many missions such as villagers' communication, leisure and drying, and playing a significant role in villagers' production and life.



Figure 3. Spatial layout diagram of courtyard in Shangwu Village, Beichuan County, Mianyang City, Sichuan Province

4. PROBLEMS OF PUBLIC SPACE LANDSCAPE IN SHANGWU VILLAGE

4.1. Lack of Functional Structure

With the change of social production structure and life style, the decline and extinction of village landscape functions, and the tendency of fragmentation of public space have greatly weakened the integrity of public space in Shangwu villages. Under the influence of modern lifestyle, the construction type, facility configuration and aesthetic standards in the village public space are difficult to meet the needs of villagers for recreation, fitness, and transportation.

4.2. Lack of Interactive Landscape

In the public space of Shangwu Village, the functional complexity of public space is low, and the interactive landscape is lacking, resulting in low communication and interaction between people and scenery. The decrease and change of public events of the traditional Qiang Cultural festival and Sarang Festival in Shangwu Village leads to the lack of interactive landscape in the village public space. For villagers, their landscape environment lacks a sense of identity and belonging to the Qiang culture. For tourists, it is not conducive to the development of experience activities, reducing their willingness to return, affecting the construction of the civilized image of villages and the opening of rural tourism activities.

4.3. Lack of Cultural Landscape

In the process of the village seeking modernization, the loss of population in the village and the lack of cultural expression of landscape in the setting, appearance and function of some facilities and pieces make it more and more difficult to maintain the historical and cultural inheritance contained in the original public landscape. The place and culture are separated to a certain extent, and the authenticity of the village environment is gradually lost. The regional characteristics of village public space landscape are not obvious.

5. SHANGWU VILLAGE PUBLIC SPACE LANDSCAPE RENEWAL DESIGN

Outside the village, there are natural characteristics of "three mountains ring arch, two water linger", and there are characteristics of the overall pattern, traditional buildings, courtyards and streets, which are the accumulation of the long history of the Shangwu villages. On the basis of the protection and utilization of the village ecological environment, an in-depth analysis of the material culture of the Shangwu villages was carried out from the aspects of village pattern, traditional architecture and courtyard streets, etc., to explore the public space landscape renewal design suitable for the village.

5.1. Landscape Design of Point-like Space for Public Buildings

In the public building space, according to the humanistic characteristics and needs of the place, plants with cultural symbolic significance are planted to create a suitable landscape atmosphere. Around the stilted buildings near the public buildings, the traditional construction technology of Qiang people will be used to repair and transform according to the functional location of the village and the degree of damage. Small-scale human intervention will be used to maintain the authenticity of the landscape environment.

5.2. Street Waterfront Linear Space Landscape Design

In the design of the waterfront space of streets and alleyways, through the excavation of villagers' memories of intangible cultural places, cultural elements such as the Qiang Sarang and the traditional embroidery craft of Qiang embroidery are used for reference to increase the cultural expression of the site landscape and improve the relevant infrastructure.

5.3. Garden Forest Block Space Landscape Design

The Shangwu Village is surrounded by mountains and formed into a river in the middle. The Xiwo Qiang Village and the ancient Qiang ruins are simmered in the mountains. Located on the river dam of the three mountains, they are organically attached to the natural environment form. The design of this area mainly focuses on maintaining the original natural landscape style, and protects the base landscape of the village with low intervention design techniques.

5.4. Maintenance of Traditional Village Buildings

The traditional architecture of Shangwu Village reflects the historical style and national characteristics of Shangwu Village, and has certain historical, scientific and artistic value, which should be classified, protected and documented. First of all, carry out architectural evaluation and classification, divide village buildings into historical buildings, style buildings and general buildings, among which the former two belong to traditional buildings, and carry out a more in-depth study on their construction history, construction techniques and artistic value. Secondly, we should strengthen the diverse protection of buildings, implement more accurate and diversified protection measures according to the different classification of traditional buildings, and carry out listing protection for historical buildings, indicating their names, ages, materials, protection responsibilities and other information, so as to improve residents' and tourists' cognition of historical buildings. The style buildings mainly protect their traditional style, restrict the villagers from self-demolition and self-construction, and invest corresponding funds to improve and maintain the architectural style. Finally, the building digital archive is established. On the basis of repair, the traditional building digital archive information database of Shangwu Village is fully established and improved, the traditional building is numbered and mapped, and the building data information is recorded in detail to form a complete building information digital database.

The use of traditional buildings can be combined with regional and cultural characteristics to present multiple forms. First, combining the tourism characteristics of Qiang mountain villages to build homestay buildings in line with the traditional style of villages, so that tourists can experience the original living flavor of Shangwu villages. The second is to develop village historical buildings and enhance historical and cultural display. The third is to rely on style buildings to create the original atmosphere of village play.

6. SUMMARY

Different from the commonly recognized Qiang villages, Shangwu Village has evolved into a courtyard street space with regional characteristics. The courtyard space of Shangwu Village is composed of axis, area and texture, and the spatial axis that conforms to its historical inheritance should be protected first, and the combination form should be prohibited. Secondly, it is also necessary to protect the interior of the courtyard space, and prohibit disorderly construction inside the courtyard to destroy the original space and texture. Shangwu Village Street winding, on both sides of the courtyard buildings, stone walls and stone lanes complement each other, houses are built with the trend, together with the landscape to form a rich rhythm and change of the laneway landscape. For the protection of village streets and lanes, protection should be given priority and rescue should come first. It is forbidden to build buildings with different styles and dismantle traditional buildings along streets and lanes at will, and it should be sorted out, protected and utilized in accordance with the principle of authenticity and integrity.

Courtyards and alleys are connected in space, and the use of them is mainly reflected in the viewing experience. One is to rely on the streets to create an authentic viewing tour line, so that tourists can shuttle through the winding streets. The second is the creation of courtyard space along the streets, through the courtyard space to show the real scene of villagers' life.

REFERENCES

- [1] Toregas C, Swain R, Reville C, et al. The Location of Emergency ServiceFacilities [J]. *Operations Research*, 1971, 19(6):1363 -1373.
- [2] Gall M. Where to go? Strategic modelling of access to emergency shelters in Mozambique [J]. *Disasters*, 2004, 28(1):82 -97.
- [3] Koutsouris A, Gidakou I, Grava F. The phantom of (agri)tourism and agriculture symbiosis? A Greek case study [J]. *Tourism Management Perspectives*, 2014, (12):94-103.
- [4] Graham Busy, Samantha Rendle. The transition from tourism on farms to farmtourism [J]. *Tourism Management*, 2000, (6).56-68
- [5] Apostolakis A. The Convergence Process in Heritage Tourism [J]. *Annals of Tourism Research*, 2003, 30:795-812.